

PRAVACHAN PLAYER

Software Installation

&

Introduction to Pravachan Player

Pravachan Player Software

→ What is Pravachan Player Software ?

Pravachan Player Software is basically an MP3 Player. It is used for playing the Pravachan of Pujya Gurudev Shree Kanji Swami.

→ It is an MP3 Player then how does it differ from any other available MP3 Player, viz. Winamp, Windows Media Player ?

Pravachan Player is actually made for playing Gurudev's MP3 Pravachan. It has lots of features like you can watch Gurudev's Photos while listening the Pravachan, you can also set autoplay feature for daily listing. You may please check below mentioned list of more features :

→ What are the features of Pravachan Player

- 1 You can watch different photos of Gurudevshree while listening the Pravachan.
- 2 Auto Play :You can preplan your future schedule of playing the Pravachan. Then as per the plan, it will start to play the Pravachan automatically. For more details, you can check Auto Play section on the help file please.
- 3 Copy Pravachan from CD/DVD to Harddisk.
- 4 Delete Pravachan from the Harddisk.
- 5 Play First or Second half (30 Min) of the Pravachan.
- 6 Full list of Pravachans from where you can play any Pravachan. (Provided Pravachan copied into Harddisk).
- 7 Pravachan Player can be set in any one of these 3 Languages. (English / Hindi / Gujarati)

→ Is there any help available on how to operate Pravachan Player ?

Yes, it is available inside Software installation CD or you can download the same from the website www.vitragvani.com .

Software Installation

Insert your CD/DVD in the CD/DVD drive, then run Setup.exe and follow the on screen instructions to install the Pravachan Player.



After the installation is complete click on the start ⇒ programs ⇒ Pravachan Player. Once "**PRAVCHAN PLAYER**" program starts, you can use commands as visible on the screen or use mouse to press buttons.

Though Pravachans can be played from CD/DVD Drives directly, We recommend that the Pravachan files be copied to hard disk then be played from the Hard Disk every day. A utility to copy and delete files from the Hard Disk is provided in software.

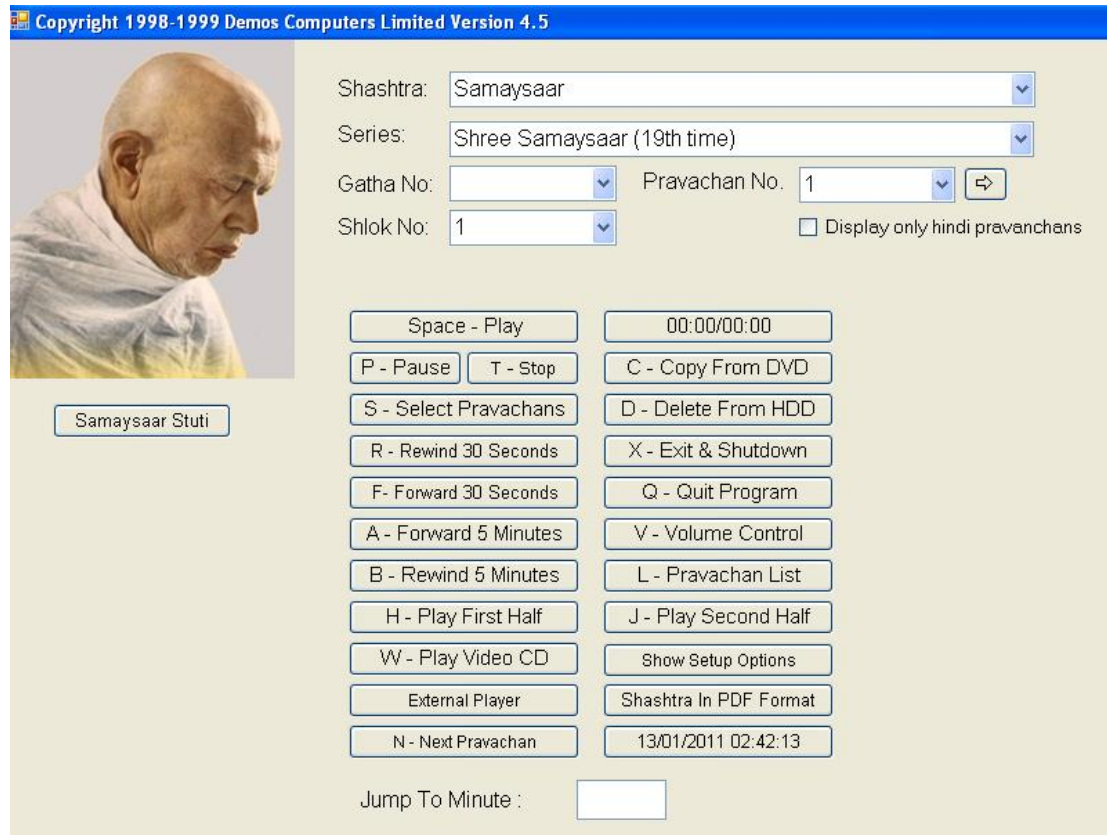
Introduction to Pravachan Player Program.

This program is made for listening the Pravachans of Param Pujya Sadgurudev Shri Kanji Swami on your Computer.

Basic Operations:

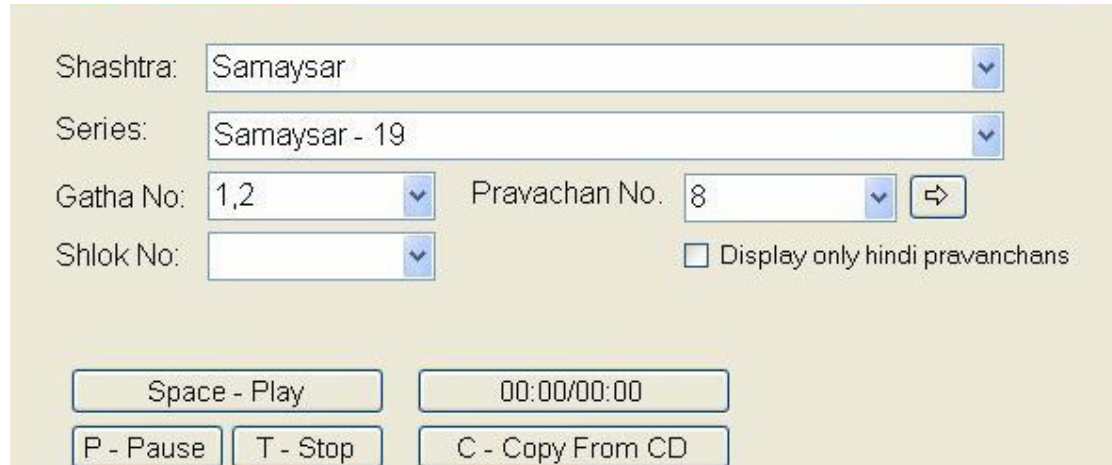
To start with Pravachan Player Program...

- Click on Start button ⇒ Programs ⇒ Pravachan Player
- When you start the Pravachan Player Program the following screen is displayed.



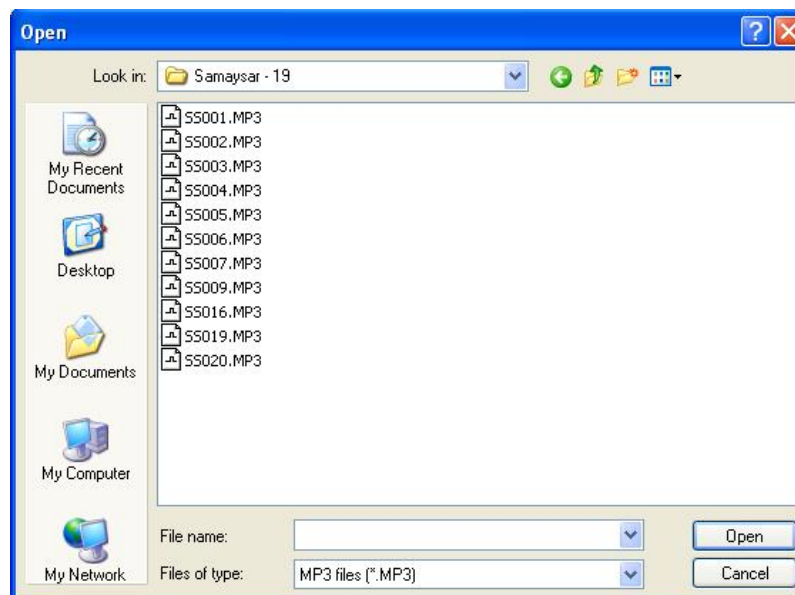
To Play Pravachan From The CD/DVD or Hard Disk

- For playing the Pravachan press any of the following key
- ❖ If the Pravachan is copied on hard disk using Pravachan Player then you can play the Pravachan using the following steps (Shown in the image below)



Select the Shashtra Name -> Select Series -> Select Gatha No. or Shlok No. or Pravachan No.-> Press **'Space – Play'** button or press **'Space bar'** on the keyboard. (You can view Hindi Pravachan only by clicking on the check box **"Display only hindi Pravachans"**)

- ❖ If Pravachan is copied on to Hard disk or if you want to play it from the DVD then press **'S – Select Pravchan'** button or press **'S'** on the keyboard - the following screen will be displayed.



Browse through the folder or DVD.

Double click on the Pravachan file, which you want to play.

Samaysaar Stuti:

- When you press '**Samaysaar Stuti**' button, it will start to play Samaysaar Stuti.

For playing Pravachans for 30 minutes you may use the following two options

1. H – Play First Half:

- When you press '**H – Play First Half**' button or press '**H**' on the keyboard, It will play Pravachan from the beginning and stop automatically on the completion of 30 Minutes.

2. J – Play Second Half:

- When you press '**J – Play Second Half**' button or press '**J**' on the keyboard, It will play Pravachan from second half onwards upto the end.

P – Pause Button:

- When you press '**P – Pause**' button or press '**P**' on the keyboard, it will pause the Pravachan.

T – Stop Button:

- When you press '**T – Stop**' button or press '**T**' on the keyboard, it will stop the Pravachan.

Space – Play Button:

- You can play new Pravachan or resume a paused Pravachan by pressing the button '**Space – Play**' or by pressing the '**Space bar**' on the keyboard.

External Player Button:

- You can play Pravachan on default MP3 player (like Winamp, Windows media player) of your computer by pressing the button '**External Player**'.

R – Rewind 30 Seconds Button:

- When you press '**R – Rewind 30 Seconds**' or press '**R**' on the keyboard, it will rewind the current Pravachan by 30 Seconds. If it is the start of the Pravachan or current position is less than 30 Seconds then this function will not work.

F – Forward 30 Seconds Button:

- When you press '**F – Forward 30 Seconds**' or press '**F**' on the keyboard, it will forward the current Pravachan by 30 Seconds. If it is the end of the Pravachan or remaining Pravachan is less than 30 Seconds then this function will not work.

A – Forward 5 Minutes Button:

- When you press '**A – Forward 5 Minutes**' or press '**A**' on the keyboard, it will forward the current Pravachan by 5 Minutes. If it is the end of the Pravachan or remaining Pravachan is less than 5 Minutes then this function will not work.

B – Rewind 5 Minutes Button:

- When you press '**B – Rewind 5 Minutes**' or press '**B**' on the keyboard, it will Rewind the current Pravachan by 5 Minutes. If it is the start of the Pravachan or current position is less than 5 Minutes then this function will not work.

Curr. Position (Current Position):

- It will display the "Time elapsed Minute" / "Total Minute" of the Pravachan in "Minutes:Seconds".

N – Next Pravachan Button:

- When you press the button '**N – Next Pravachan**' or press '**N**' on the Keyboard it will jump to next Pravachan number. This button is useful for playing next Pravachan of previously played Pravachan. For example, if you have listen Pravachan no. 25 on previous day then by pressing Next Pravachan button, It will move to Pravachan no. 26. It is very useful for daily listeners.

X – Exit & Shutdown Button:

- When you press the button '**X – Exit & Shutdown**' or press '**X**' on the Keyboard it will close the Pravachan Player program & shutdown your computer.

Q – Quit Program Button:

- When you press the button '**Q – Quit Program**' or press '**Q**' on the Keyboard it will close the Pravachan Player program and return to windows.

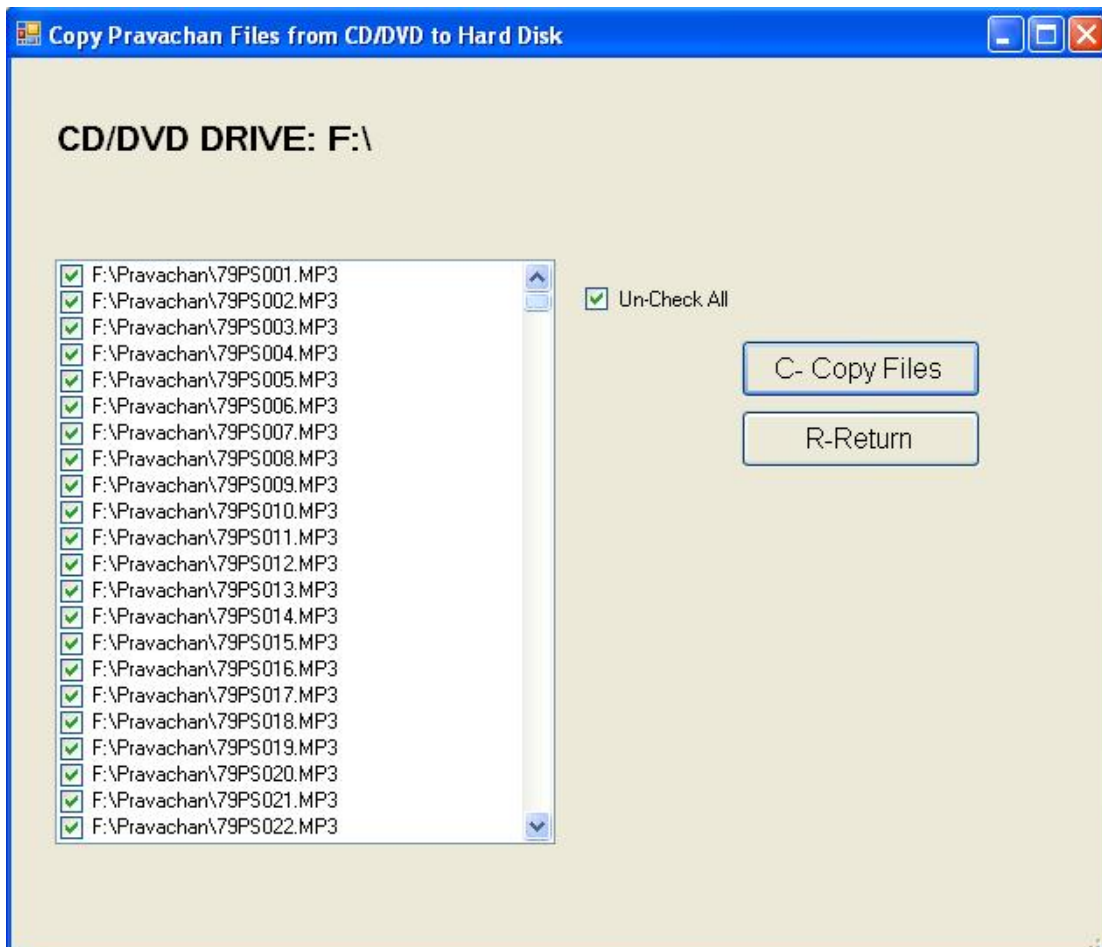
Shashtra in PDF Format:

- When you press the button '**Shashtra in PDF Format**' it will display a list of PDF Shashtras copied inside "C:\Pravachan\PDF" (Where "C:\\" is your default drive) folder from which you can select the shashtra of your choice you want to open & so as to read from the same.

NOTE : Please copy all the PDF shashtra file into "C:\ Pravachan\PDF". (where "C:\\" is your default drive).

To Copy file from CD/DVD on to your Hard disk.

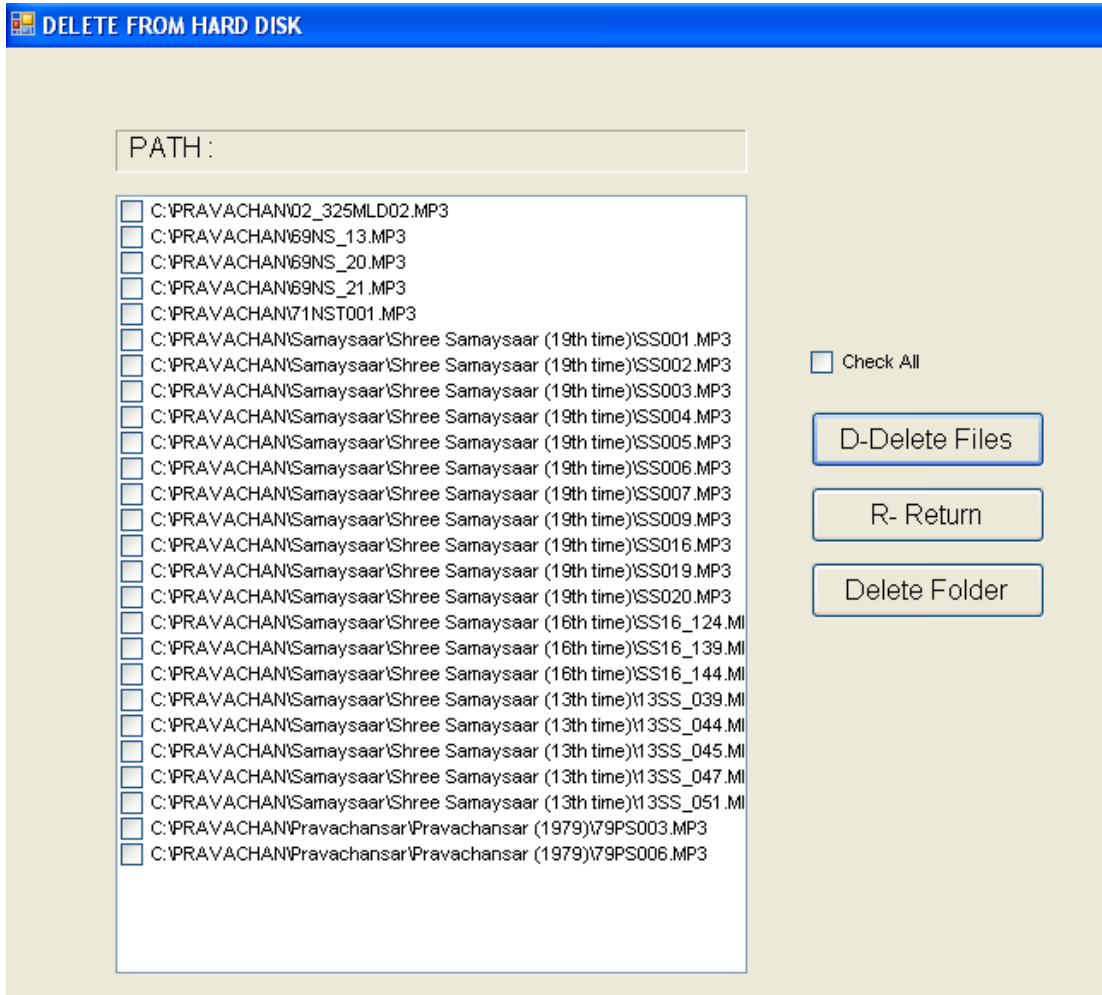
- Insert the CD/DVD in the CD/DVD drive
- Click on button '**C – Copy From CD/DVD**' or Press '**C**' on the Keyboard, the following screen will be displayed.



- Select one or multiple files and then press button '**C-Copy Files**' or press '**C**' on the keyboard to copy all the selected files to hard disk.
- Use "Check All" / "Un-Check All" check box to select / de-select all Pravachans.
- When files are being copied, a message with file name is displayed, file names keep changing as the process continues. When process is complete this message of copying will disappear.
- After copying the files, press button '**R-Return**' or press '**R**' on the keyboard to return to the main screen.

To Delete Pravachans from the Hard disk.

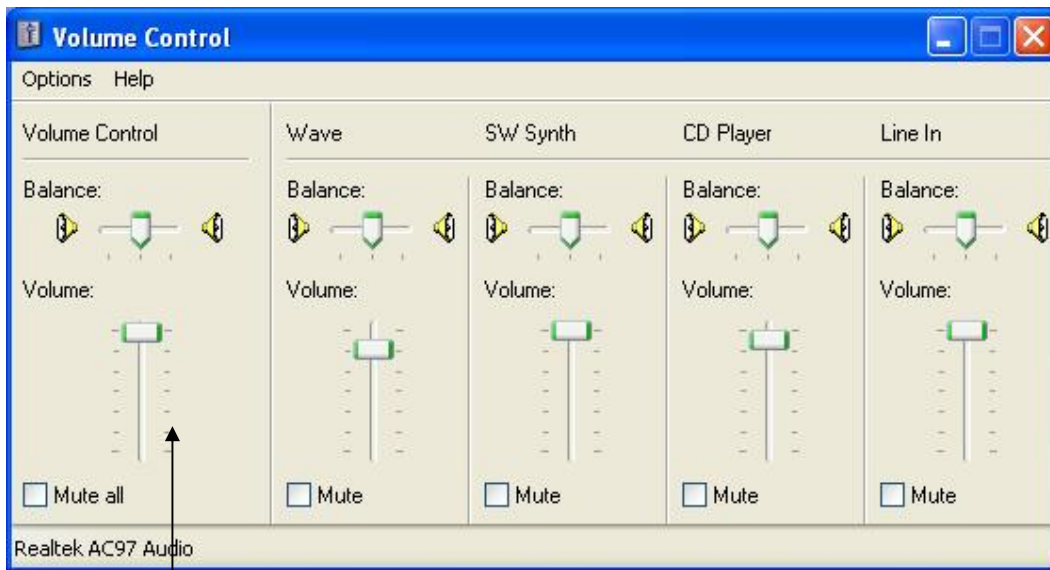
- Click on button '**D – Delete From HDD**' or Press '**D**' on the Keyboard, the following screen will be displayed.



- Select one or multiple files and then press button '**D-Delete Files**' or press '**D**' on the keyboard to delete selected files form hard disk.
- Press button '**Delete Folder**' to delete shashtra wise folders form the hard disk.
- After deleting the files press button '**R-Return**' or press '**R**' on the keyboard to return to the main screen.

V – Volume Control:

- When this Button is pressed, it will display a Volume Control screen.



Volume Control Slider

- By using the Volume Control Slider you can increase and decrease the volume. It is recommended to keep the 'Wave' and 'Volume Control' to highest.
- In the Volume Control area click Mute All to turn off sound.

W – Play Video CD (VCD):

- Click on button '**W – Play Video CD**' or Press '**W**' on the Keyboard, To Play Video CD (Insert Video CD in CD/DVD drive before pressing 'W'). It will play the VCD in default video player of your computer.

To Display a List of all Pravachan Files.

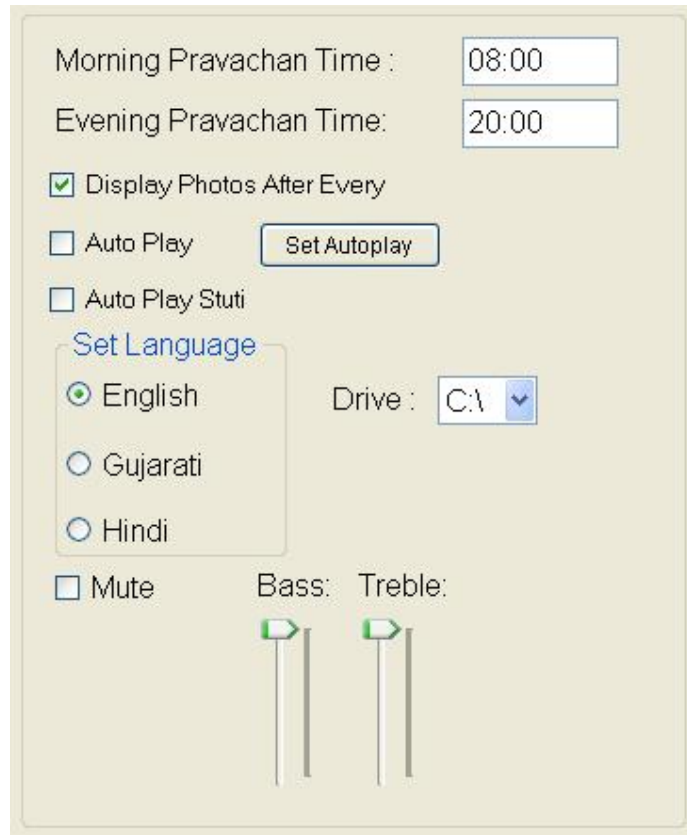
- Click on 'L – Pravachan List' Button or Press 'L' on keyboard to see the list of all Pravachan files, it will shows the following screen.

PRAVACHAN_NO	GATHA	SHLOK	PRAVACHAN_DATE	_DAY	VIKRAM_DATE	NEW/DVD NO	BATTERY	HINDI	REMARKS
1	1,2		9/6/1970	TUE	JETH सं 5	13	*		(१) विक्रम संवत् २०२५, शुक्र पंचमी, (१)
2	2		10/6/1970	WED	JETH सं 6	13	**		
3	2		11/6/1970	Thu	JETH सं 7	13	*		
4	2		12/6/1970	Fri	JETH सं 8	13			
5	2		13/6/1970	Sat	JETH सं 9	13			
6	2		14/6/1970	Sun	JETH सं 10	13	*		
7	2		15/6/1970	Mon	JETH सं 11	13	*		
8	2,3		16/6/1970	Tue	JETH सं 12	13	*		
9	3,4		17/6/1970	Wed	JETH सं 13	13	*		
10	5,6,7		18/6/1970	Thu	JETH सं 14	13	*		
11	8,9,10		19/6/1970	Fri	JETH सं 15	13			
12	11,12,13		20/6/1970	Sat	JETH सं 1	13	*		
13	13,14,15		21/6/1970	Sun	JETH सं 2	13	*		
14	16,17,18		22/6/1970	Mon	JETH सं 3	13	*		
15	18,19,20		23/6/1970	Tue	JETH सं 4	13	*		
16	21,22,23		24/6/1970	Wed	JETH सं 6	13	*		
17	24,25,26		25/6/1970	Thu	JETH सं 7	13			
18	26,27,28		26/6/1970	Fri	JETH सं 8	13			
19	29,30,31		27/6/1970	Sat	JETH सं 9	13			
20	32,33,34		28/6/1970	Sun	JETH सं 10	13			
21	35-36,1		29/6/1970	Mon	JETH सं 11	13			(२) शुक्रवाड़ा
22	1,2,3		30/6/1970	Tue	JETH सं 12	13	*		
23	3,4		1/7/1970	Wed	JETH सं 13	13			
24	4,5,6		2/7/1970	Thu	JETH सं 14	13			
25	6		2/7/1970	Fri	JETH सं 15	13	*		

- Select the Shashtra from the list of Shashtra that you would like to see.
- You can see name of all the Pravachan files with their Pravachan No, Gatha No, Shlok No, Date & Day of the Pravachan.
- To see only Hindi Pravachan list kindly click on "Display only Hindi Pravachans"
- If you want to Play the Pravachan from the list then click on the Pravachan name & then click on "Play" button (Provided Pravachan is present on the Harddisk.)

Show setup Options :

- It will display Pravachan Player setup option as shown in the image below.
- Press Show setup options button second time to Hide all the setup options.



The image shows a software setup dialog box for the Pravachan Player. It contains the following elements:

- Morning Pravachan Time : 08:00
- Evening Pravachan Time: 20:00
- Display Photos After Every
- Auto Play with a "Set Autoplay" button
- Auto Play Stuti
- A "Set Language" section with three radio buttons: English (selected), Gujarati, and Hindi.
- A "Drive" dropdown menu currently set to "C:\".
- Mute
- Bass and Treble sliders, both currently at the minimum position.

Pravachan time Morning / Evening :

- When you enter time in Pravachan time Morning (Format 24 Hrs - HH:MM) then it will automatically plays Pravachan at that time. You have to just select the Pravachan from the above list. It will automatically start and play at fixed time.

Display Photos:

- When you check on '**Display Photos**', it will display different photos of Param Pujya Sadgurudev Shri Kanji Swami during the Pravachan.
- You can also set the time say "**After Every _____ Seconds**" for duration of photos to be delayed (By default it is 30 Seconds). It means that second photo will appear on your screen after completion of duration of time.

Auto Play:

TIME_MOR	SHASHTRA_MOR	PRAVACHAN_NOI	REMARKS_MOR	DATE_1	DAY_1	TIME_EVE	SHASHTRA_EVE
08:00	Samaysar - 19	1	Guj	11-06-2010	Friday	09:00	Niyamsar - 1966
08:00	Samaysar - 19	2	Guj	12-06-2010	Saturday	09:00	Niyamsar - 1966
08:00	Samaysar - 19	3	Guj	13-06-2010	Sunday	09:00	Niyamsar - 1966
08:00	Samaysar - 19	4	Guj	14-06-2010	Monday	09:00	Niyamsar - 1966
08:00	Samaysar - 19	5	Guj	15-06-2010	Tuesday	09:00	Niyamsar - 1966
08:00	Samaysar - 19	6	Guj	16-06-2010	Wednesday	09:00	Niyamsar - 1966
08:00	Samaysar - 19	7	Guj	17-06-2010	Thursday	09:00	Niyamsar - 1966
08:00	Samaysar - 19	8	Guj Not Copied on HDD	18-06-2010	Friday	08:00	
08:00	Samaysar - 19	9	Guj	19-06-2010	Saturday	08:00	
08:00	Samaysar - 19	10		20-06-2010	Sunday	08:00	
08:00				21-06-2010	Monday	08:00	
08:00				22-06-2010	Tuesday	08:00	
08:00				23-06-2010	Wednesday	08:00	
08:00				24-06-2010	Thursday	08:00	
08:00				25-06-2010	Friday	08:00	
08:00				26-06-2010	Saturday	08:00	
08:00				27-06-2010	Sunday	08:00	
08:00				28-06-2010	Monday	08:00	
08:00				29-06-2010	Tuesday	08:00	
08:00				30-06-2010	Wednesday	08:00	
08:00				01-07-2010	Thursday	08:00	
08:00				02-07-2010	Friday	08:00	
08:00				03-07-2010	Saturday	08:00	
08:00				04-07-2010	Sunday	08:00	
08:00				05-07-2010	Monday	08:00	
08:00				06-07-2010	Tuesday	08:00	

- When you click on '**Auto Play**', It will automatically start the Pravachan at a particular time on all set days (for Mandir / Swadhyay Hall only)
- Following are the step to setup auto play.
 Enter "From Date" and "To Date" at top for the period you want to plan for playing Pravachan (Default period is one month from today's date).
 Select whether you want to plan for morning Pravachan (Before 12 noon) and/or afternoon Pravachan (after 12.00 noon)
 Time format in Autoplay is 24 Hrs Format i. e. (HH:MM)
 Enter time in "TIME_MOR" (morning play time) column of first day of your planned dates.
 Click Shashtra Field and Select Shashtra from the popup menu,
 Enter Pravachan Number in Pravachan no column and press Enter key.
 In Remarks column you will see Gujarati or Hindi language of the selected Pravachan and whether Pravachan is present on the Harddisk or not.
 For automatic entry of next day – First set the first day entry – Play time, shashtra name, Pravachan No & then click on **Pravachan no** field then press Down Arrow. You can see the next Pravachan entry will come automatically.
Reset Button is provided for deleting all the entries.

Auto Play Stuti :

- When you check this button, It will automatically play samaysar stuti with the auto play before starting of the Pravachan.

For Example, if your auto play Pravachan is going to start at 8.00 am then stuti will start around 7.52 am & finish before starting of the Pravachan.

Set Language :

- Set language option to English, Gujarati or Hindi. Which will change the button caption to appropriate language.

Drive :

- Select drive letter where the Pravachans are copied on to the Hard disk. (Default is 'C' Drive). If you already have attached Pravachan external hard disk then select drive letter of the external Harddisk. Pravachan will automatically be played from that Harddisk & also when you copy new DVD, it will get copied on that harddisk automatically.

Mute :

- Click Mute to turn off sound.

Bass & Treble :

- You can adjust Bass & Treble of Pravachan voice. This option will work only with the sound card which supports Bass & Treble.

Jump To Minute:

- It is used for the start of the Pravachan at a particular Minute. You can write Minute inside that edit box & press Enter.

Note: In case of any difficulty, contact

Shree Kundkund-Kahan Parmarthik Trust

302, Krishna Kunj, V.L. Mehta Marg,

Vile Parle-w., Mumbai – 400056.

Ph. No.: (022)2610 4912 or 2613 0820

E-Mail : info@vitragvani.com

Trouble shooting:

1. If CD/DVD is not accepted in CD/DVD drive:
 - Clean your CD/DVD drive with CD/DVD lens cleaner.
 - Use another CD/DVD from the set of Pravachan CD/DVD.

2. If voice is not loud:
 - press 'V' for volume and adjust Wave Output and Volume Control slider to highest.

3. If current position time changes but no voice is heard:
 - Check for volume control or check the connection between computer to speakers.

4. If output quality is poor , check cabelling, and always use "AUX" port of your amplifier for input from Computer (If you use mike, voice output is always poor.)